



กระทรวงเกษตรและสหกรณ์  
Ministry of Agriculture and Cooperatives

**Tentative Program**  
**The Program of Study Visit and Meeting on Rubber**  
**Under the theme “Standard and Variety of Thai Rubber”**  
**27<sup>th</sup> - 30<sup>th</sup> June 2018**  
**Krabi and Trang Province**

---

**27<sup>th</sup> June 2018**

- Arrival of Foreign Rubber Entrepreneurs from aboard at Suvarnabhumi Airport
- Check-in at Novotel Airport Suvarnabhumi Hotel
- Dinner at the Hotel

**28<sup>th</sup> June 2018**

- 08.00 – 09.30 hrs. - Leave Suvarnabhumi Airport for Krabi Airport by Thai Airways TG 241 (TBC)
  - 10.00 – 11.30 hrs. - Leave Krabi Airport by bus for sightseeing
  - 11.30 – 12.00 hrs. - Check-in at Dusit Thani Krabi Beach Resort and refreshment
  - 12.00 – 13.30 hrs. - Lunch at Dusit Thani Krabi Beach Resort
  - 13.30 – 15.00 hrs. - Free Time
  - 15.00 – 15.30 hrs. - Register
  - 15.30 – 16.00 hrs. - Official Opening Ceremony**
  - 15.30 – 16.00 hrs. (1) Welcome Performance (10 mins.)  
(2) VDO Presentation (10 mins)  
(3) Welcome Address by the Krabi Provincial Governor  
(4) Deliver Report by the Permanent Secretary of the Ministry of Agriculture and Cooperatives  
(5) Opening Remark by the Minister of Agriculture and Cooperatives
  - 16.00 – 17.00 hrs. - Meeting on Rubber Cooperation and Thai Rubber Market**
    - (1) Presentation on Thai Government Policy on Rubber by the Minister of Agriculture and Cooperatives
    - (2) Presentation on Opportunities of Thai Rubber Production, Rubber Processing and Rubber Products by the Governor of the Rubber Authority of Thailand (RAOT)
    - (3) Presentation on Rubber Investment Incentives by the Secretary General of the Thailand Board of Investment (BOI), Prime Minister’s Office
    - (4) Presentation on Agro-Tourism by the Governor of the Tourism Authority of Thailand (TAT), Ministry of Tourism and Sports
  - Discussion and Exchange Views
  - Q & A
-

- 18.00 – 20.30 hrs. - Dinner Reception at the Hotel  
Hosted by the Minister of Agricultural and Cooperatives  
20.30 hrs. - Stay overnight at Dusit Thani Krabi Beach Resort

**29<sup>th</sup> June 2018**

- 08.00 – 10.00 hrs. - Check out at Dusit Thani Krabi Beach Resort  
- Head to Wang Kiri Rubber Fund Cooperatives Ltd.  
10.00 – 10.45 hrs. - Visit Wang Kiri Rubber Fund Cooperatives Ltd. (45 mins)  
(GMP premium natural rubber product)  
10.45 – 11.30 hrs. - Leave Wang Kiri Rubber Fund Cooperatives Ltd. for Trang  
Provincial Cooperative Federation Ltd.  
11.30 – 12.00 hrs. - Visit Trang Provincial Cooperative Federation Ltd. (30 mins)  
12.00 – 12.15 hrs. - Leave Trang Provincial Cooperative Federation Ltd. for lunch  
12.15 – 13.15 hrs. - Lunch at BanSuan Sudaporn  
13.15 – 13.45 hrs. - Leave restaurant for Plan Creations Co., Ltd. (30 mins)  
(Para rubber toy product)  
13.45 – 14.30 hrs. - Visit Plan Creations Co., Ltd.  
14.30 – 15.00 hrs. - Leave Plan Creations Co., Ltd. for Sri Trang Co., Ltd.  
15.00 – 16.00 hrs. - Visit Sri Trang Co., Ltd. (rubber gloves, vehicle tires) (1 hr.)  
16.00 – 16.30 hrs. - Back to Rua Rasada Hotel in Trang Province  
16.30 – 18.00 hrs. - Sightseeing  
18.30 – 20.00 hrs. - Dinner at the Hotel  
Hosted by the Rubber Authority of Thailand (RAOT)  
20.00 hrs. - Stay overnight at Rua Rasada Hotel

**30<sup>th</sup> June 2018**

- 09.00 – 12.00 hrs. - Business Matching at Rua Rasada Hotel  
10.00 – 10.15 hrs. - Refreshment Break  
12.00 – 13.00 hrs. - Lunch  
14.00 – 16.00 hrs. - Leave for Bangkok by airplane (TBA)

Remark: All Activities are subject to change for suitability.



### REPLY FORM

The Program of Study Visit and Meeting on Rubber Under the theme  
"Standard and Variety of Thai Rubber"  
in Krabi and Trang Province, Thailand  
During 27<sup>th</sup> – 30<sup>th</sup> June 2018

#### 1. Personal Data

Name: \_\_\_\_\_  
Position: \_\_\_\_\_  
Company/ Agency: \_\_\_\_\_  
Website: \_\_\_\_\_  
Address: \_\_\_\_\_  
\_\_\_\_\_

Tel: \_\_\_\_\_  
Fax: \_\_\_\_\_  
Mobile Number: \_\_\_\_\_  
E-mail \_\_\_\_\_

#### 2. Attention

- I will attend all the program  
 I will not attend the program

3. Product of Interest \_\_\_\_\_

4. Desired Amount \_\_\_\_\_

The expect time arrival/departure

Arrival on \_\_\_\_\_ Departure on \_\_\_\_\_

Remark: please copy to another one

---

Please return this form to the Foreign Affairs Sub-Division Rubber Authority of Thailand  
by Wednesday, 30 May 2018, by E-mail: [ir.raot@gmail.com](mailto:ir.raot@gmail.com) or Fax (+66)2424- 3683

For further inquiries, please contact:

Telephone: (+66)0 2433-2222 ext 215 , Fax (+66)2424- 3683

Contact person: 1. Mr.Natchanon Noppakunkajorn/ 2. Ms.Parimon Charoontham/ 3. Ms.Boonyaroot Saesim

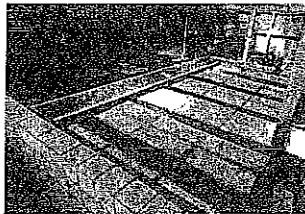
---

Study Visit the Thai Rubber Factories under the theme "Standard and Variety of Thai Rubber"

Wang Kiri Rubber Fund Cooperative Ltd.

Thailand embarked to produce ribbed smoked sheet (RSS) with premium grade by used guidance of the principle of Good Manufacturing Practices (GMP) standard which are authorized by rubber technology research and development division, the Rubber Authority of Thailand (RAOT). RSS GMP has established several detailed guidelines covering tapping, collection, dilution, coagulation, battery sheeting, smoke-dried, grading, storage and transportation. Good advantage of GMP Rubber is every pieces of products will have same size, weight, and have better quality than the common one.

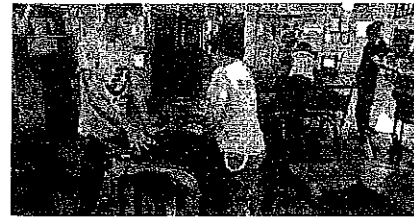
In the recent years, ROAT has already certified GMP certificates to twelve-funded cooperatives of RSS factories in Thailand which one of twelve-funded cooperatives is Wang Kiri Rubber Fund Cooperative Ltd. in Trang province, Southern of Thailand. Wang Kiri Rubber Fund Cooperative has production capacity about 500 tons per year.



Trang Provincial Cooperative Federation Ltd.

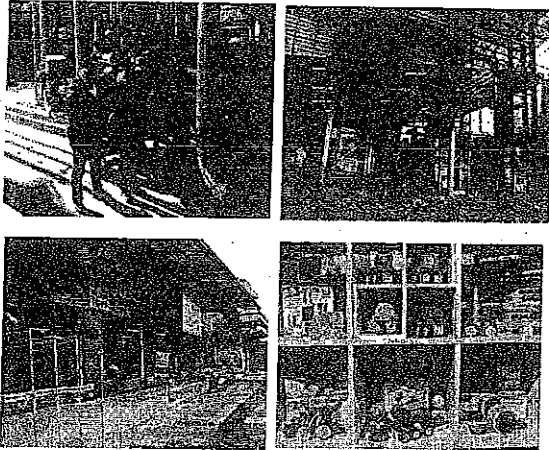
Thailand has 17 GMP bales factories which high manufacturing, quality and satisfaction for product in various industries such as aviation, automobile, transportation and etc.

Trang Provincial Cooperative Federation Ltd. is 1 of 19 GMP bales factories. It is a center of business, service and learning for co-operative member and other members which has already produce ribbed smoked sheet large bales maximum production 1,500 tons per month or 22,500 tons per year and small bales about maximum productivity 1,100 tons per month or 13,000 tons per year by used guidance of the principle of Good Manufacturing Practices (GMP) standard. Furthermore, Trang Provincial Cooperative Federation Ltd. has many international and national certificates to guarantee its quality.



Plan Creations Co., Ltd.

PlanToys is leading manufacturer and exporter of baby toys in the world PlanToys makes its toys from rubber wood, a sustainable by product of the latex industry's harvesting of trees used for natural rubber production. Using the trees as a resource in this way for wooden toys made by PlanToys is environmentally responsible as following;



- To keep the wood pure, no fertilizer is added to the soil three years prior to cut the trees down.

- To strengthen the wood, uses a chemical-free kiln-drying process.

- PlanWood is another high quality, safe and sustainable material in toy-making process. This material will be used in harmony with solid rubber wood.

- PlanToys is assembled using a certified E-Zero formaldehyde free glue in place of traditional toxic wood glue.

- PlanToys commits itself to find the best eco-friendly

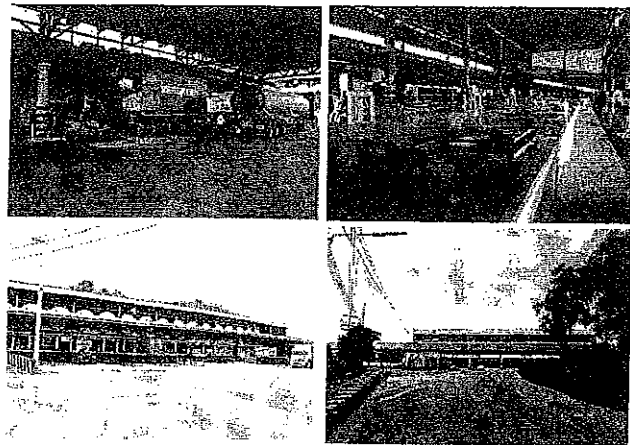
material. The organic color is not only good for children but also for environment.

- PlanToys does not use chemical dyes containing lead or any other heavy metals.

- Recycled paper and Soy ink are used for printed materials. Soy ink is more readily biodegradable and can be recycled more efficiently than standard chemical ink.

Sri Trang Agro-Industry Plc.

Sri Trang Agro-Industry Plc. (STA) is currently the world's largest fully integrated natural rubber company with a market share of 12% of global natural rubber consumption. STA have operations in every sector of the natural rubber industry, from rubber plantations and rubber processing to the manufacture of medical examination gloves. The core of STA operations is natural rubber processing. STA produce a complete range of natural rubber products, from Technically Specified Rubber (TSR) and Ribbed Smoked Sheets (RSS) to Concentrated Latex. STA's 37 production facilities are located in Thailand, Indonesia and Myanmar. Together they have a total production capacity of 2.9 million tons per year.



Concentrated latex from STA is derived from field latex about 560,000 tons per year and has a dry rubber content of approximately 60%.

Products are classified depending on the level of ammonia requirement as well as process requests. In addition, concentrated latex serves as the raw material in the production of numerous products, including gloves, condoms, baby pacifiers, elastic and adhesives.

Participants will be able to meet and discuss with the following government officials and agencies:

1. Minister of Agriculture and Cooperatives;
2. Permanent Secretary of Ministry of Agriculture and Cooperatives;
3. Governor of the Rubber Authority of Thailand; and
4. Board of Investment of Thailand